

Trade fairs cancelled. And now? LCTech presents its product news.

BE PART OF IT



Login

German

Print

Search

*LCTech-en*

*Products*

*Immunoaffinity and further Clean-up Columns*

*Aflatoxins M1*

*AflaCLEAN M1 Select*

# AflaCLEAN M1 Select

## Mycotoxins

### Immunoaffinity Columns for Clean-up of Aflatoxin M1



The AflaCLEAN M1 Select columns can be processed either manual or automated, for example, with the LCTech robotic system [FREESTYLE SPE](#). The loading capacity of the columns is max. 100 ng Aflatoxin M1.

The immunoaffinity column AflaCLEAN M1 Select was developed for the sample preparation within the food analysis via HPLC with fluorescence detection and LC-MS, respectively.

## Advantages at a Glance

- 3 mL format
- Shelf life: 9 months cooled at 4 to 8 °C
- Loading capacity: 100 ng Aflatoxin M1
- Recovery rates: Aflatoxin M1 > 90 %
- Suitable for automated processing

## Functionality of the Columns

The monoclonal antibody is specifically designed for this application and thus guarantees best results, even with difficult matrices. The working mode is based on the principles of immunoaffinity. The material within the columns is covered with antibodies which are directed against aflatoxin M1. Upon application of an extract onto the column, the aflatoxins are retained, whereas the remaining matrix components pass through the column. After a washing step removing matrix interferences, the aflatoxins can be eluted quantitatively from the column with methanol and subsequently measured with HPLC.

## Quality is important to us!

Since the antibodies as well as the immunoaffinity columns are produced by LCTech, numerous in-house quality tests over the whole production process guarantee a persistent quality. LCTech meets the high demands of European and international legal requirements concerning mycotoxin analysis and controls every single production step. A detailed quality certificate is included in each pack.

## Recovery Rates

In the following recovery rates (%) of aflatoxin M1 in different matrices are shown, cleaned-up with

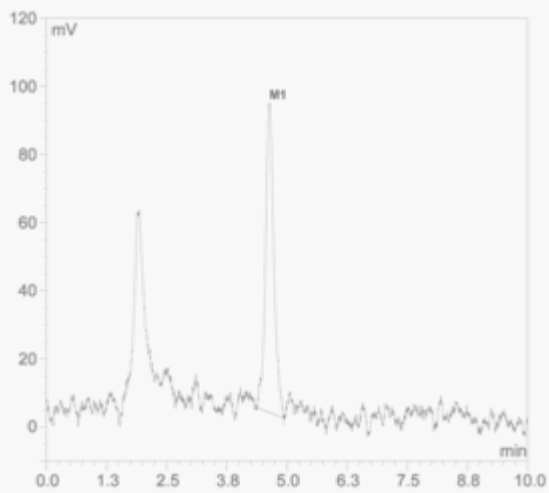
LCTech's 3 mL immunoaffinity columns AflaCLEAN M1 Select and analysed with an HPLC/FLD system. The samples were spiked with 80 ppb aflatoxin M1 respectively. The results correspond to the performance specifications of EC 401 / 2006 (Section 4.3.1):

Matrix	Aflatoxin M1
Milk	103
Raw Milk	104
Milk Powder	104

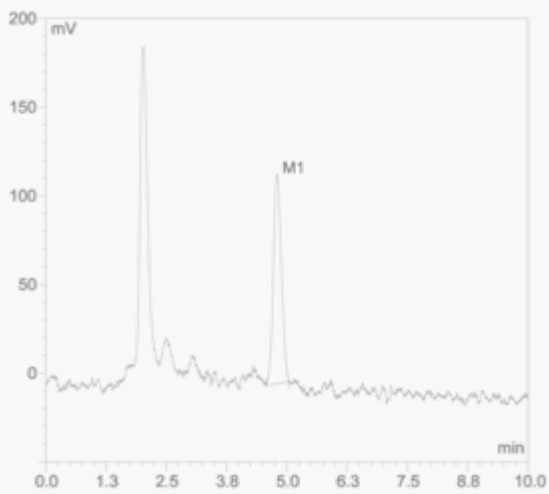


## Chromatograms

In the following some exemplary chromatograms are shown, which were obtained by using AflaCLEAN M1 Select columns:



*Raw milk, spiked with 4 ng aflatoxin M1*



*Milk powder, spiked with 4 ng aflatoxin M1*

Please contact us

---

+49 8082

2717-0info@LCTech.de

---

Would you like it a little faster?

[AflaCLEAN M1 SMART for a faster processing of your samples](#)

Automated sample preparation

[Automated sample preparation via FREESTYLE](#)

Brochures

[Brochure mycotoxins \( pdf | 2 MB \)](#)

Poster presentation

[Mycotoxins - Invisible, odourless, yet, an unwanted ingredient in food and feed \( pdf | 791 KB \)](#)

Application Notes

[Determination of aflatoxin M1 via FREESTYLE ThermELUTE™ with online HPLC-measurement \( pdf | 767 KB \)](#)

Matrix of the month

[AflaCLEAN M1 Select in our matrix of the month](#)



© 2020 LCTech GmbH

[Disclaimer](#) |

[Data Security Statement](#) |

[Terms of Service](#) |

[Sitemap](#) |