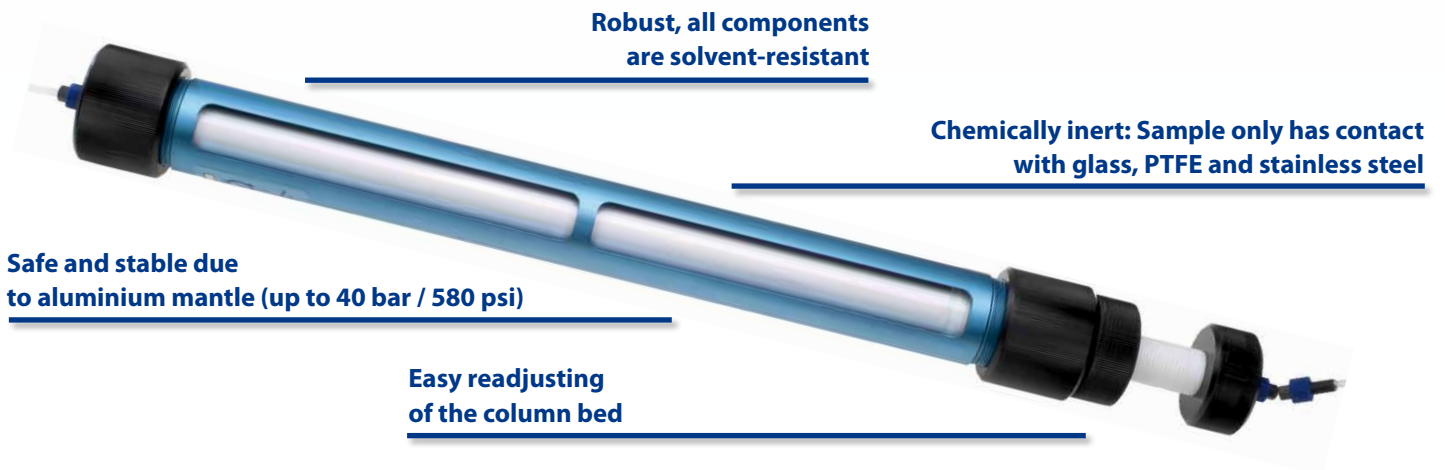


GPC Columns

Functionality Through and Through

The LCTech GPC columns are designed for easy and self-explanatory handling. Due to their robustness they can be used for every-day analysis in laboratories.

The columns are available filled or unfilled as well as in different lengths and filling heights. Suitable filling kits are provided for easy refilling.



The LCTech Filling Kit

With the LCTech **Filling Kit** the column can easily be refilled.

Afterwards the column is sealed and filling height is defined like shown here.



Further Advantages at a Glance:

- Sealed due to a clever construction with few sealing elements
- Resistant to pressure (rated for 20 bar / 290 psi continuous operation and 40 bar / 580 psi short-term)
- No cross-contamination in subsequent samples, even with demanding matrices
- Applicable for several common methods
- Quality certificate and test chromatogram for each column

Further Informations about:

► info@LCTech.de

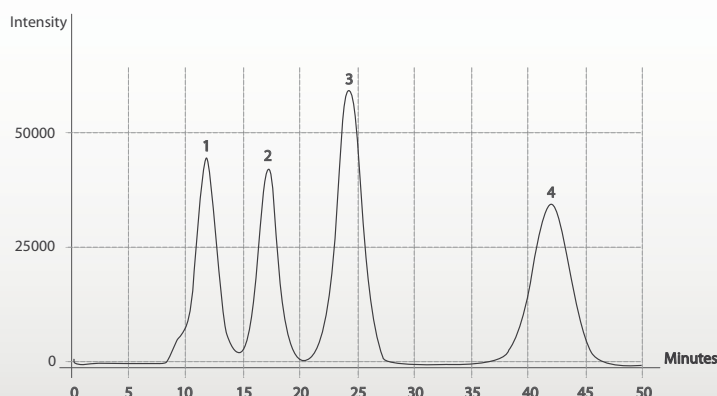
To Ordering Information

Ordering Information

Filled GPC Columns					
P/N	Dimensions, ID*	Bio-Beads S-X3 Filling	Bed Length	Solvent**	Method (e. g.)
GPC10011	500 x 40 mm, ID=25 mm	50 g	320 mm	EA/CY 1/1	L 00.00-34 acc. §64 LFGB
GPC20011	500 x 25 mm, ID=10mm	10 g	330 mm	EA/CY 1/1	Mini GPC Italy
GPC30011	660 x 40 mm, ID=25 mm	70 g	450 mm	EA/CY 1/1	Modified USEPA 3640 A
GPC40011	425 x 40 mm, ID=20 mm	24 g	225 mm	EA/CP 7/3	FSIS CLG-CHC3
GPC40021	470 x 40 mm, ID=20 mm	30 g	300 mm	EA/CY 1/1	F. Hildmann et al / J. Chromatogr. A 1403 (2015) 1-20
GPC50011	780 x 55 mm, ID=25 mm	70 g	540 mm	DC	USEPA 3640 A, EPA Method 1614
GPC60011	660 x 40 mm, ID=25 mm	70 g	400 mm	DC/HX 1/1	AOAC Official Method 2007.09
GPC70011	660 x 40 mm, ID=25 mm	50 g	385 mm	DC	-
GPC80011	500 x 40 mm, ID=25 mm	35 g	224 mm	EA/CH 1/1	-
GPC90011	500 x 40 mm, ID=25 mm	35 g	200 mm	DC/HX 1/1	USP Monographs: Lanolin
Unfilled GPC Columns					
P/N	Dimensions, ID*	Variable Filling Height			
GPC10010	500 x 40 mm, ID=25 mm	305 - 365 mm			
GPC20010	500 x 25 mm, ID=10mm	300 - 365 mm			
GPC30010	660 x 40 mm, ID=25 mm	440 - 500 mm			
GPC40010	425 x 40 mm, ID=20 mm	201 - 256 mm			
GPC40020	470 x 40 mm, ID=20 mm	272 - 327 mm			
GPC50010	780 x 55 mm, ID=25 mm	510 - 640 mm			
GPC60010	660 x 40 mm, ID=25 mm	385 - 495 mm			
GPC70010	660 x 40 mm, ID=25 mm	385 - 495 mm			
GPC80010	500 x 40 mm, ID=25 mm	198 - 256 mm			
GPC90010	500 x 40 mm, ID=25 mm	198 - 265 mm			
Filling Kits					
P/N	Suitable for following Columns				
GPC10012	GPC10011, GPC10010, GPC30011, GPC30010, GPC40011, GPC40010, GPC40020, GPC40021, GPC50011, GPC50010, GPC60011, GPC60010, GPC70011, GPC70010, GPC80011, GPC80010, GPC90011, GPC90010				
GPC20012	GPC20011, GPC20010				

*ID = Inner Diameter; **CY = Cyclohexane, CP = Cyclopentane, DC = Dichlormethane, EA = Ethyl Acetate; HX = Hexane, Mixing ratio on volume basis

QA-Chromatogram of a Column



Column GPC10011

Ethylacetate/Cyclohexane: 5.0 mL/min

Injection Volume: 5 mL

UV-Detection: 254 nm

1. Corn Oil: 25 g/L
2. DEHP: 1 g/L
3. Methoxychlor: 0.2 g/L
4. Perylene: 0.02 g/L

Tested Quality:
To each filled LCTech GPC column a QA chromatogram is attached, showing the perfect separation of the test components.