

# Matrix of the Month

November 2014:

## Aflatoxin M1 in Condensed Milk



Do you have a special matrix that we should test for mycotoxins?  
Please let us know and write an e-mail to [info@LCTech.de](mailto:info@LCTech.de)!

### Protocol

Centrifuge condensed milk for 10 minutes at 3000 x g separating the fat. Take off the fat and pipette 10 g of the condensed milk in an 100 mL measuring cylinder. Adjust the solution with PBS- buffer to 100 mL. Filtrate the diluted solution to delete any particulate matter.

Apply 50 mL of the homogeneous mixture (represents 5 g condensed milk) to the immunoaffinity column AflaCLEAN M1 Select and rinse afterwards the sample reservoir with 2 x 5 mL of de-ionised water. Apply this washing solution onto the IAC column, too.

Dry the column and elute with 2 mL methanol. Pay attention that the methanol incubates within the column bed for 5 minutes to ensure that the antibody is entirely denaturated.

Dilute and measure the eluate to HPLC conditions.

### HPLC Conditions

#### Aflatoxin M1

HPLC: Isocratic

Column oven: 36 °C

Separation column: RP C18 (e.g. P/N 10522)

Flow rate: 1.2 mL/min, water/methanol/acetonitrile (60/30/15 (v/v/v))

Fluorescence detection: without derivatisation

Excitation wavelength: 365 nm

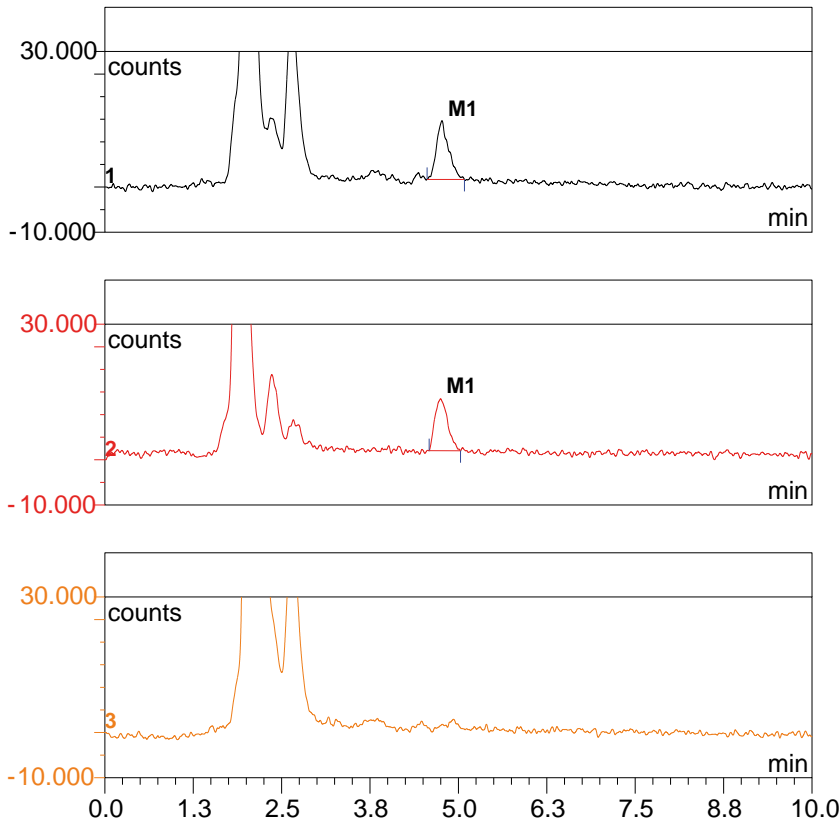
Emission wavelength: 435 nm

### Recovery Rates

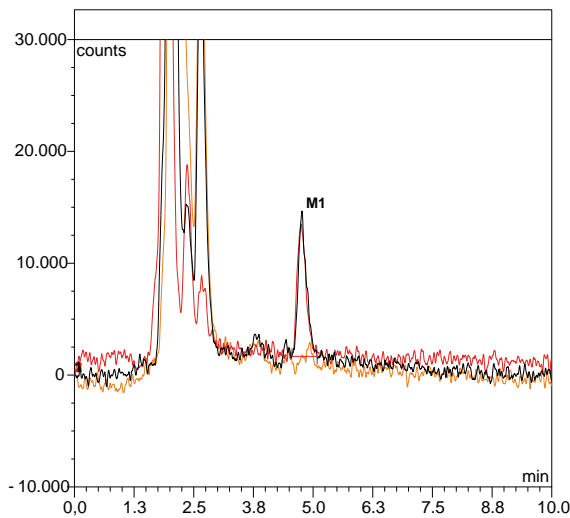
Content of Aflatoxin M1 in Condensed Milk	
Aflatoxin	M1
Standard*	100
Recovery rate** Condensed milk 10 ppt	101

\* Standard is set = 100 % , \*\* corrected with non-spiked sample

Chromatograms



Condensed milk, spiked with 100 ppt Aflatoxin M1 (black)  
 Standard 0,5 ng / 2 mL, represents 100 ppt sample (red)  
 Condensed milk, not spiked (orange)



Overlay of the three chromatograms shown above

For faster processing ...

... just take the immunoaffinity column AflaCLEAN M1 SMART.

The small column format brings down the manual processing time under 20 minutes and reduces the solvent consumption by more than 80 %.

The concentration of the toxin remains constant compared to the 3 mL format of the column.



These LCTech products were used:

AflaCLEAN M1 Select  
 Immunoaffinity column  
 for Aflatoxin M1

P/N 14202 / 14201

HPLC column,  
 for mycotoxin analysis

P/N 10522

© LCTech GmbH, Germany, as of: November 2014

Do you have further questions?  
 Please just write an e-mail to info@LCTech.de!