

Aflatoxin Analysis

AflaCLEAN Select

Immunoaffinity Columns for Sample Clean-up

Best Price !

Reliable Sample Preparation

The LCTech immunoaffinity column AflaCLEAN Select has been developed for the clean-up of food and feed samples for subsequent aflatoxin analysis via HPLC.

It is available as 1 mL and 3 mL version.

The maximum loading capacity is 200 ng aflatoxin B1. It shows selectivity against the aflatoxins B1, B2, G1 and G2 .

The chromatographical results are excellent with high recoveries and without disturbing matrix effects.

The columns work well even with challenging samples and are applied for a broad range of matrices, e.g peanuts, pistachios, maize, rice, ...

Certified Quality

LCTech meets quality demands of international directives on a consistently high level and extensively controls all production steps.

A comprehensive quality control certificate is added to each package.

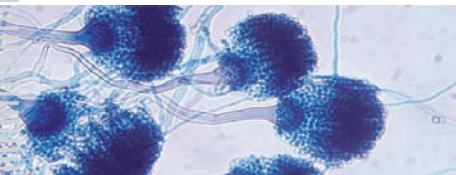


Easy Handling

Manuals for the clean-up of diverse matrices are additionally available.

In case you wish to clean up larger volumes LCTech offers special sample reservoirs.

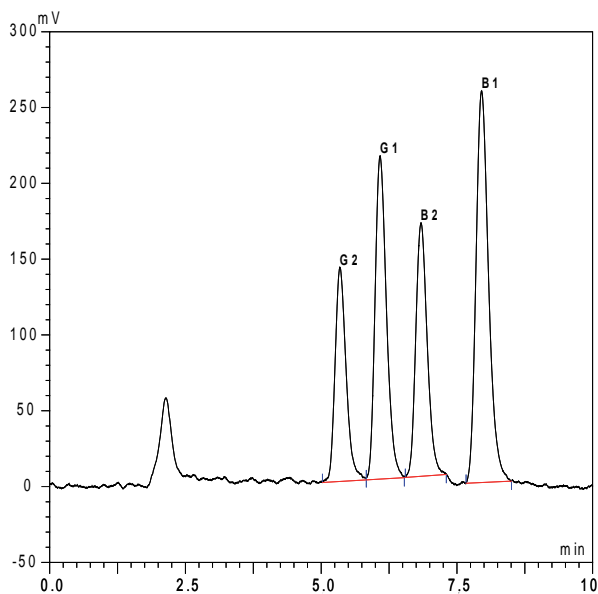
For products concerning easier handling or automation please contact LCTech.



AflaCLEAN Select at a Glance

- ✓ Excellent recoveries
- ✓ Tested for a broad range of matrixes
- ✓ Certified lots
- ✓ Tested quality
- ✓ Extraction and using information added to each package





LCTech checks each lot in-house for functionality and documents the results with a quality certificate.



Support in every aspect

We run our own laboratory for all applications and maintain close contact with our customers.

This contributed to our extensive experience in the field of mycotoxin analysis.

We will be pleased to support all your enquiries and requests - whether this method introduction, an unusual matrix or anything else.

Feel free to contact us.

Recoveries (%) of aflatoxins in several matrices, cleaned up with LCTech immunoaffinity column AflaCLEAN Select and analyzed by HPLC/FLD and post-column derivatization with LCTech UVE™ Spiked with 10 ppb total aflatoxin

| Matrix | B1 | B2 | G1 | G2 |
|-----------------|----|----|----|----|
| Peanuts | 94 | 95 | 92 | 87 |
| Pistachios | 94 | 93 | 95 | 91 |
| Corn | 91 | 91 | 95 | 85 |
| Sunflower seeds | 93 | 94 | 93 | 88 |

▲ Analysis with LCTech immunoaffinity column AflaCLEAN Select shows excellent recoveries

◀ Chromatographic results are without any matrix interferences and thus easy to interpret afterwards

Ordering Information

| Product number | Description |
|----------------|--|
| 12058 | AflaCLEAN Select, 3 mL, 25 pcs / package Immunoaffinity column for aflatoxins B1, B2, G1 and G2 |
| 12059 | AflaCLEAN Select, 3 mL, 500 pcs / package |
| 12062 | AflaCLEAN Select, 1 mL, 25 pcs / package |
| 12323 | AflaCLEAN Select, 1 mL, 100 pcs / package |
| 12063 | AflaCLEAN Select, 1 mL, 500 pcs / package |
| 10519 | UVE™, photochemical derivatization module for aflatoxin analysis |

For further products concerning mycotoxin analysis please visit www.Lctech.de/



LCTech GmbH
 Bahnweg 41
 84405 Dorfen, Germany
 Tel. +49 (0)8081 / 9368-0
 Fax +49 (0)8081 / 9368-10
 info@LCTech.de

Your direct contact concerning applications:



Dr. Uwe Aulwurm,
 Head of Applications
 Tel. +49 (0)8081 / 9368-82
 mycotoxins@LCTech.de

Visit us at www.LCTech.de/!

LCTech GmbH is based in Dorfen, Germany, and develops and distributes innovative products and methods for the preparation and analysis of food, feed and environmental samples.

Worldwide LCTech is represented by a well-developed distributor network.