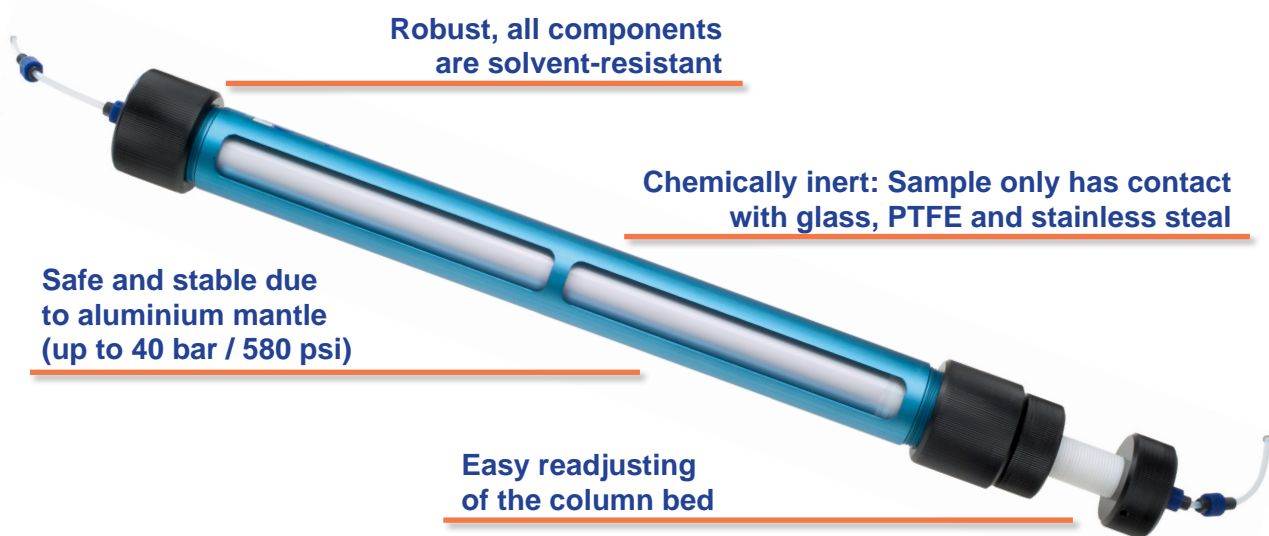


GPC Columns

Functionality through and through

The LCTech GPC columns are designed for easy and self-explanatory handling. Due to their robustness they can be used for every-day analysis in laboratories.

The columns are available filled or unfilled as well as in different lengths and filling heights. Suitable filling kits are provided for easy refilling.



Robust, all components
are solvent-resistant

Chemically inert: Sample only has contact
with glass, PTFE and stainless steel

Safe and stable due
to aluminium mantle
(up to 40 bar / 580 psi)

Easy readjusting
of the column bed



With the LCTech filling kit
the column can easily
be refilled.

Afterwards the column is
sealed and filling height is
defined like shown here.

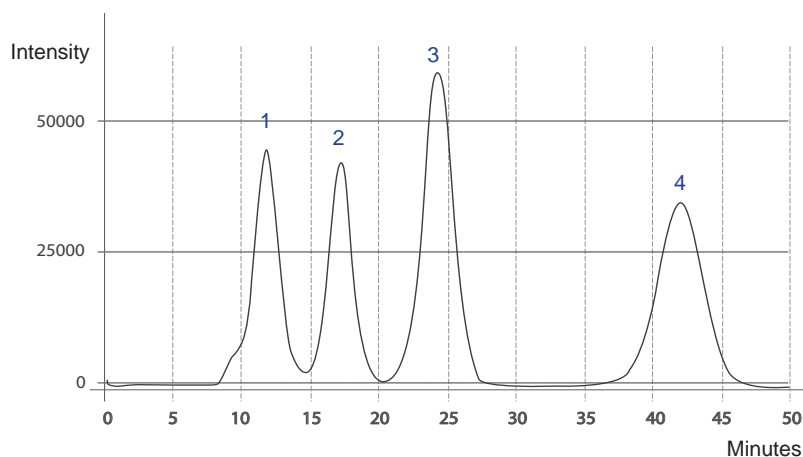


Further advantages at a glance:

- ▶ Sealed due to a clever construction with few sealing elements
- ▶ Resistant to pressure (rated for 20 bar / 290 psi continuous operation and 40 bar / 580 psi short-term)
- ▶ No cross-contamination in subsequent samples, even with demanding matrices
- ▶ Applicable for several common methods
- ▶ Quality certificate and test chromatogram for each column



LCtech GPC columns - tested quality:



QA chromatogram of a column GPC10011

ethylacetate/cyclohexane 5.0 mL/min
injection volume 5 mL

UV detection at 254 nm

1. corn oil 25 g/L
2. DEHP 1 g/L
3. methoxychlor 0.2 g/L
4. perylene 0.02 g/L



To each filled LCtech GPC column a QA chromatogram is attached, showing the perfect separation of the test components.

Ordering information

Filled GPC columns

P/N	Dimensions ID*	Bio-Beads S-X3 Filling	Bed length	Solvent**	Method (e.g.)
GPC10011	500 x 40 mm 25 mm	50 g	320 mm	EA/CY 1/1	DFG S19
GPC20011	500 x 25 mm 10 mm	10 g	330 mm	EA/CY 1/1	Mini GPC Italy
GPC30011	660 x 40 mm 25 mm	70 g	450 mm	EA/CY 1/1	Modified USEPA 3640 A
GPC40011	425 x 40 mm 20 mm	24 g	225 mm	EA/CP 7/3	FSIS CLG-CHC3
GPC50011	780 x 55 mm 25 mm	70 g	540 mm	DC	USEPA 3640 A, EPA Method 1614
GPC90011	500 x 40 mm 25 mm	35 g	200 mm	DC/HX 1/1	USP Monographs: Lanolin

* ID = inner diameter

** CY = cyclohexane; CP = cyclopentane; DC = dichlorometane; EA = ethyl acetate; HX = hexane, mixing ratio on volume basis

Unfilled GPC columns

P/N	Dimensions, ID*	Variable filling height	Method (e.g.)
GPC10010	500 x 40 mm, 25 mm	305 - 365 mm	DFG S19
GPC20010	500 x 25 mm, 10 mm	300 - 365 mm	Mini GPC Italy
GPC30010	660 x 40 mm, 25 mm	440 - 550 mm	Modified USEPA 3640 A
GPC40010	425 x 40 mm, 20 mm	201 - 256 mm	FSIS CLG-CHC3
GPC50010	780 x 55 mm, 25 mm	510 - 640 mm	USEPA 3640 A, EPA Method 1614
GPC90010	500 x 40 mm, 25 mm	198 - 265 mm	USP Monographs: Lanolin

* ID = inner diameter

Filling kits

P/N	suitable for the columns
GPC10012	GPC30011, GPC10011, GPC90011, GPC40011, GPC30010, GPC10010, GPC90010, GPC40010
GPC20012	GPC20011, GPC20010

www.Lctech.de

www.Lctech.de